



PARKS, RECREATION, OPEN SPACES AND TRAILS ADVISORY BOARD MEETING

Meeting Agenda

2/12/2026

6:00 PM

Location: Leeper Center Community Room Join the Zoom Webinar Meeting:

Please click the link below to join the webinar:

<https://us06web.zoom.us/j/83317874726?pwd=QktQMkFaMWUzeHNObWpvRVY0UVNoQT09>

Or One tap mobile:+17193594580,83317874726

Webinar ID: 833 1787 4726

Passcode: 586406

1. Call To Order
2. Roll Call
3. Public to be Heard on Non-Agenda Items
4. Approval of Minutes
 - a. January 14, 2026 PROST Work Session - Meeting Minutes
5. Action Items / Discussion Items
 - b. 2026 Event Coordination with Recreation Staff: Emma Stanley and Elle McNamara
 - c. Master Plan and Community Center Feasibility: Preparation for combined PROST and Board of Trustees Work Session with Berry Dunn
 - d. Harvest Park Shed
 - e. Future Calendar
6. Announcements (Parks, Recreation, Open Space and Trails)
 - f. Town Staff
 - i. Parks
 - ii. Recreation
 - iii. Open Space
 - iv. Trails

- g. Board of Trustee Liaison
- h. PROST Board Members

7. Adjourn

The Town of Wellington will make reasonable accommodations for access to Town services, programs, and activities and special communication arrangements. Individuals needing special accommodation may request assistance by contacting at Town Hall or at 970-568-3380 ext. 110 at least 24 hours in advance.



PARKS, RECREATION, OPEN SPACES AND TRAILS ADVISORY BOARD MEETING

Meeting Minutes

January 14, 2026

Location: Leeper Center Community Room

Meeting Recording Available

PROST WORKING SESSION

Meeting Notes

Date: January 14, 2026

Time: 6:00pm – 8:02pm

Attendees: John Evans, Lorilyn Bockelman, Sarah Braun, Joe Burke, Robert Sausaman, Jessi Roper, Billy Cooksey, Rebekka Dailey

A. Roll Call

- ☐ Completed.

B. Public Comment on Non-Agenda Items

Boy Scouts / Eagle Scouts

- ☐ Clint (Boy Scouts) asked why Wellington doesn't have a public pool and what would be required to build one.
- ☐ Billy shared that the **Master Plan & Feasibility Study with BerryDunn** is underway and will guide decisions about community spaces (including a potential pool). Funding remains the biggest challenge.

Girl Scouts

- ☐ Lorilynn updated on the **Girl Scout Silver Award Community Garden proposal**.

Eagle Scout Projects

- ☐ Prior projects referenced:
 - 2019 Skate Park ramp
 - 2023 Garden at Leeper Center

General Project Ideas

- ☐ Joe encouraged Scouts to consider community projects such as trail maps, murals, park benches, Veterans Garden support, etc.

C. Approval of Minutes

- **November 5, 2025**
 - Motion to approve by Robert
 - Seconded by Joe
 - Motion Passed

D. Board Review and Discussion/Action Items

A. 2025 Annual Review

1. Highlights & Updates

- Skate park repairs completed (gator skins, hole patches) with help from Town staff.
- Significant community engagement through BerryDunn Master Plan activities, park play days, and visits.
- ADA dock ribbon cutting well-attended.
- Increased use noted at the dog park.
- Trail maps well received; discussion of QR codes and kiosks at bike stations.
- Interest in ongoing map updates, especially for North Wellington.
- Continued work on the Veterans Garden with American Legion partnerships.
- Donations received for various Town needs.

2. Master Plan Review Process

- PROST members to review Master Plan over the next 4 weeks.
- Internal review → PROST consolidation → BOT Work Session.
- Goal: Visioning, level of service analysis, and alignment.
 - Billy will send ZIP file and upload documents to Drive.
- Key Dates:
 - PROST Meeting: Feb 11
 - BOT Work Session: Feb 17
- Presentation to BOT
- PROST wants to present accomplishments directly to the BOT.
- Consensus: Presentation should occur for the newly elected BOT (late April).
- Target: Master Plan adoption by mid-2026.
- Adoption ensures alignment with Town funding, policies, and grant applications.
- Visibility
- Suggestion for an annual PROST accomplishments list on website or in Town pamphlet.
- Consider adding PROST accomplishments to the Annual Budget Book.

- Next Steps
 - JR will email out 2025 Annual Report draft for feedback.
 - Members encouraged to review last year's report format.

B. 2026 Projects

3. Budget Considerations

- 2026 capital budget already set.
- Master Plan will guide priorities; PROST may bring additional funding requests to BOT.
- Minor Park Improvements budget: \$65k available.
- Importance of aligning all recommendations with Master Plan.

4. Skate Park

- Needs: Quarter pipe replacement and maintenance.
- Estimated \$5k for labor if TOW performs the work.
- To be handled after Master Plan review.

5. Future Work

- Recommend a work session after Master Plan adoption to create a 5–10 year plan.
- Upcoming projects and updates:
 - Wellville trail completion (Public Works)
 - Repurposing lights from Cleveland
 - Alley and business lighting improvements

6. Multi-Golf Course – Knolls Linear

- Design expected by end of February.
- Possible implementation by April.
- Creek crossing costs high due to ADA (~\$250k), but redesign may reduce need.

7. Major Projects

- Finalizing and adopting Master Plan
- Park lighting improvements (Park Meadows, Viewpoint)
- Bike stations & map boxes (**bring Bike Station example next meeting)
- Veterans Garden at WCP
 - Donor for fire pit secured (via American Legion)
 - Need further design review & work session
 - Must coordinate with Fire Department
 - Discussion on funding, community engagement, and alignment with Master Plan
 - **Recommend a Work Session dedicated to Veterans Garden

- Community Center concept
 - Estimated 60,000 sq ft
 - Reviewed BD renderings
 - Consider impact on local businesses (e.g., private gyms)

C. 2026 Events

- Planned Events & PROST Participation:
 - Night Beyond Limits – Feb 20 (volunteers needed)
 - St. Patrick’s Festival – March 14 (consider PROST booth)
 - Arbor Day – April
 - Kids to Parks Day – May
 - Fishing Derby (separate from KtPD)
 - Movies in the Park
 - July 4 Celebration
 - PROST float
 - Robert: truck/trailer
 - Jessi: decorations
 - Trick or Treat – Oct 31
 - Veterans Day Celebration – Nov 17
 - Parade of Lights – Dec 5

D. 2026 PROST Calendar

- Feb 11: Staff present volunteer needs for all events.
- Need sign-up lists and time slots for the full year.
- March:
 - July 4 planning
 - Skate park proposal review & vote
 - Work session on Veterans Garden
- Park Visits resume in April:
 - April: East Side
 - May: Viewpointe / CC Site
 - June: WCP
 - Aug: Centennial
- Consider inviting Transportation Plan team (April tentative).
- July meeting to be skipped (to be approved in June).
- Explore additional PROST member seat + potential WMHS student liaison.
- Encourage visit to comparable ADA-accessible towns.

6. Announcements (topics incorporated into previous discussions)

- Staff updates across Parks, Recreation, Open Space, Trails.
- BOT Liaison updates.
- PROST Board member updates.

7. Adjournment

- Meeting adjourned at 8:02pm.

Date	Event	Location	Event Hours	Movie Hours	Staff Numbers	Staff Shift	Volunteers Needed	Food Trucks	Face Painter	Yard Games	Axe Throwing	Basketball	Inflatables			180 Wacky Dual
													Soccer/Football	Football	Lava Run	
Friday, February 20	Night Beyond Limits	Boys & Girls Club	6:30pm-8:30pm			5 3:30p-10p	ALL				X					
Saturday, April 25	Arbor Day	Wellville Park	10:00am-12:00pm		1 Cood+3Sea	8am-1:30pm		2								
Saturday, May 16	Kids to Parks Day/Movie	Wellington Community Park	6:00pm-8:00pm	8:00pm-	All Hands on Deck	4pm-10:30pm		3	X3	X (who pay)	X		X		X	
Saturday, July 4		Wellington Community Park			All Hands on Deck	8am-4pm	TONS			X	X	X	X	X	X	x
Saturday, June 20	Movie	Park Meadows	7:30pm-8:30pm	8:30pm	1 Cood+2Sea	6pm-11pm		2	X	X						
Saturday, July 18	Movie	Viewpointe	7:30pm-8:30pm	8:30pm-	1 Cood+2Sea	6pm-11pm		2	X	X						
Saturday, August 15	Movie	Wellington Community Park	7:00pm-8:00pm	8:00pm-	1 Cood+2Sea	5:30pm-10:30pm		2	X	X						
Saturday, September 19	Movie/Pirate Party	Winick	5:30pm-7:00pm	7:00pm-	6 (2 seasonal stay till end)	3:30pm-10pm	ALL		X2	X (who pay)	X				X	

Date	Event	Location	Event Hours
Friday, February 20	Night Beyond Limits	Boys & Girls Club	6:30pm-8:30pm
Saturday, April 25	Arbor Day	Wellville Park	10:00am-12:00pm
Saturday, May 16	Kids to Parks Day/Movie	Wellington Community Park	6:00pm-8:00pm
Saturday, July 4		Wellington Community Park	
Saturday, June 20	Movie	Park Meadows	7:30pm-8:30pm
Saturday, July 18	Movie	Viewpointe	7:30pm-8:30pm
Saturday, August 15	Movie	Wellington Community Park	7:00pm-8:00pm
Saturday, September 19	Movie/Pirate Party	Winick	5:30pm-7:00pm



2026 Parks and Recreation Scavenger Hunt Plan

What: 2026 Parks and Recreation Scavenger Hunt

When: Once a month April – September

April 25, 2026	Arbor Day	Wellville Park
May 16, 2026	Kids to Parks Day	Wellington Community Park
June 20, 2026	Movie Night in the Parks	Park Meadows Park
July 18, 2026	Movie Night in the Parks	Viewpointe Park
August 15, 2026	Movie Night in the Parks	Wellington Community Park
September 19, 2026	Pirate Party/Movie Night in the Parks	Winick Park

Where: Monthly department event locations. See the chart above for specific locations and dates.

How: There will be a laminated Recy the Raccoon that will be hidden at each of the department's events April – September. When the Recy the Raccoon is found, it will be taken from its location and brought to a staff member on site of the event or to the MSB the next week to receive their prize.

Prize: A \$20 credit on SmartRec to be used towards any program.

Marketing: We will take pictures at each location with the Recy the Raccoon to help market/advertise our events. These pictures will be used for social media posts as we promote these events.

FIND RECY THE RACCOON!

Think you know your Wellington parks?
Find Recy at Parks & Recreation events
for a chance to win a prize!

CHECK OUT OUR
UPCOMING EVENTS





BerryDunn



**Town of Wellington
PROST Master Plan and
Feasibility Study
Board of Trustees
Visioning Session
February 17, 2026**

**WELLINGTON
COMMUNITY
PARK**





01 Plan Overview

02 Progress

03 Plan Findings to Date

04 Your Input, Your Vision

05 Next Steps



Progress




We are here



Engagement Summary

Goal: Comprehensive Engagement

Have a **SAY** How you **PLAY!**

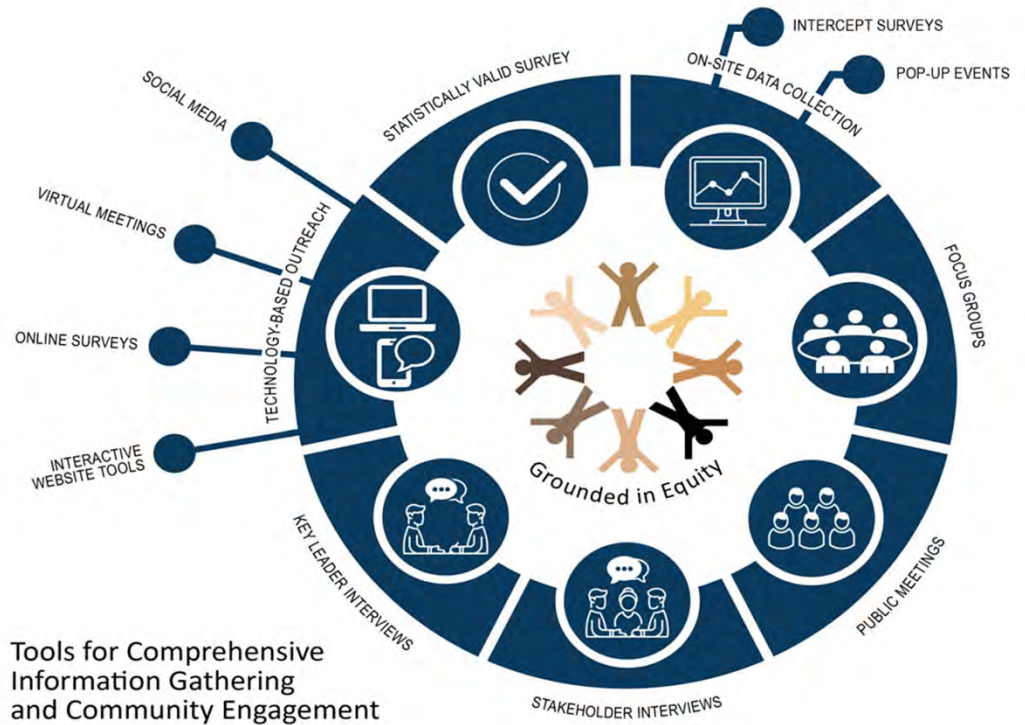
The future of parks and recreation belongs to you! Tell us your ideas and join the planning process.



TELL US YOUR IDEAS!
bit.ly/wellingtonparksplan



Parks, Recreation, Open Space, and Trails Master Plan



Engagement

Parks, Recreation, Open Space, and Trails Master Plan

TOWN OF WELLINGTON

Have a **SAY** How you **PLAY!**



TELL US YOUR IDEAS!

The future of parks and recreation belongs to you!

bit.ly/wellingtonparksplan



Engagement





Transparent and Inclusive Process

Using a variety of tools and facilitation techniques have proven to increase the diversity and number of people engaged.



“Going to the People”



Online Engagement Portal

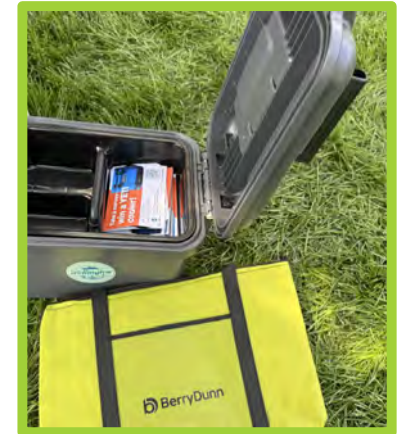


Internal and Staff Activities



Surveys

We believe engagement can inspire awareness and support for the Town and Parks and Recreation Department.



The Voices of Wellington

Have a **SAY**
How you
PLAY!

The future of parks and recreation belongs to you! Tell us your ideas and join the planning process.



TELL US YOUR IDEAS!
bit.ly/wellingtonparksplan



Parks, Recreation, Open Space, and Trails Master Plan

Outreach Method	Points of Contact
Social media (organic)	7,482
Social media (paid)	45,071
E-newsletters (August and September)	1,568
Town website	53
Project website	1,051
Pop-up engagements	6,309
Community survey	312
Total	61,846

The Voices of Wellington

Have a **SAY How you **PLAY!****









The future of parks and recreation belongs to you! Tell us your ideas and join the planning process.



TELL US YOUR IDEAS!
bit.ly/wellingtonparksplan

TOWN OF WELLINGTON Parks, Recreation, Open Space, and Trails Master Plan

Department Strengths				Areas of Improvement			
Well Supported	Dedicated Staff	Inclusive Events	Accessible Spaces	Improved Facilities	New Programs	New Sports and Fitness Programs	Better Maintenance

			
Swimming Pools	Recreation Centers	Basketball Courts	Shade and Gathering Spaces
<hr/>			
			
Youth and Adult Sports	Playground and Park Features	Events and Cultural Activities	Other Park Amenities

The Voices of Wellington

Have a **SAY**
How you
PLAY!

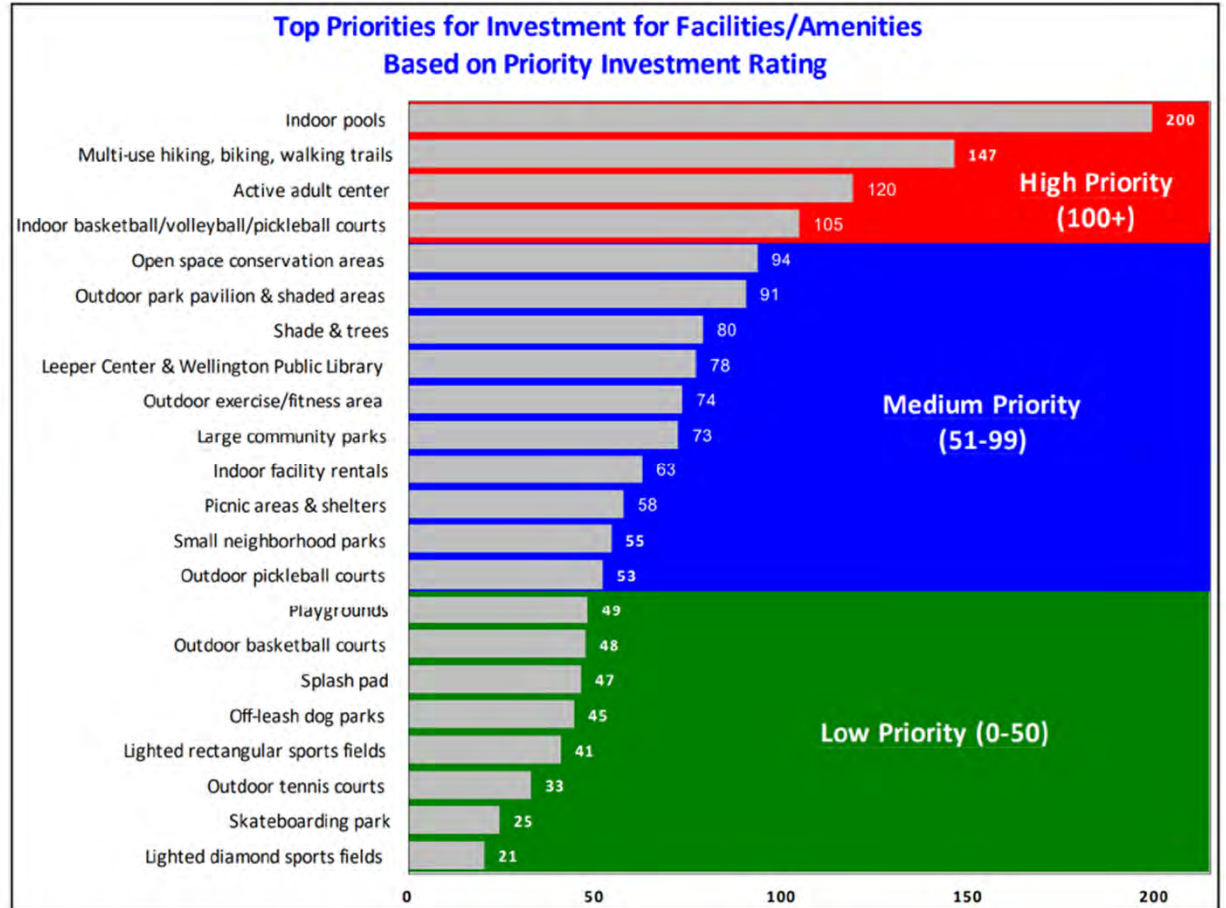
The future of parks and recreation belongs to you! Tell us your ideas and join the planning process.



TELL US YOUR IDEAS!
bit.ly/wellingtonparksplan



Parks, Recreation, Open Space, and Trails Master Plan



The Voices of Wellington

Have a **SAY**
How you
PLAY!

The future of parks and recreation belongs to you! Tell us your ideas and join the planning process.

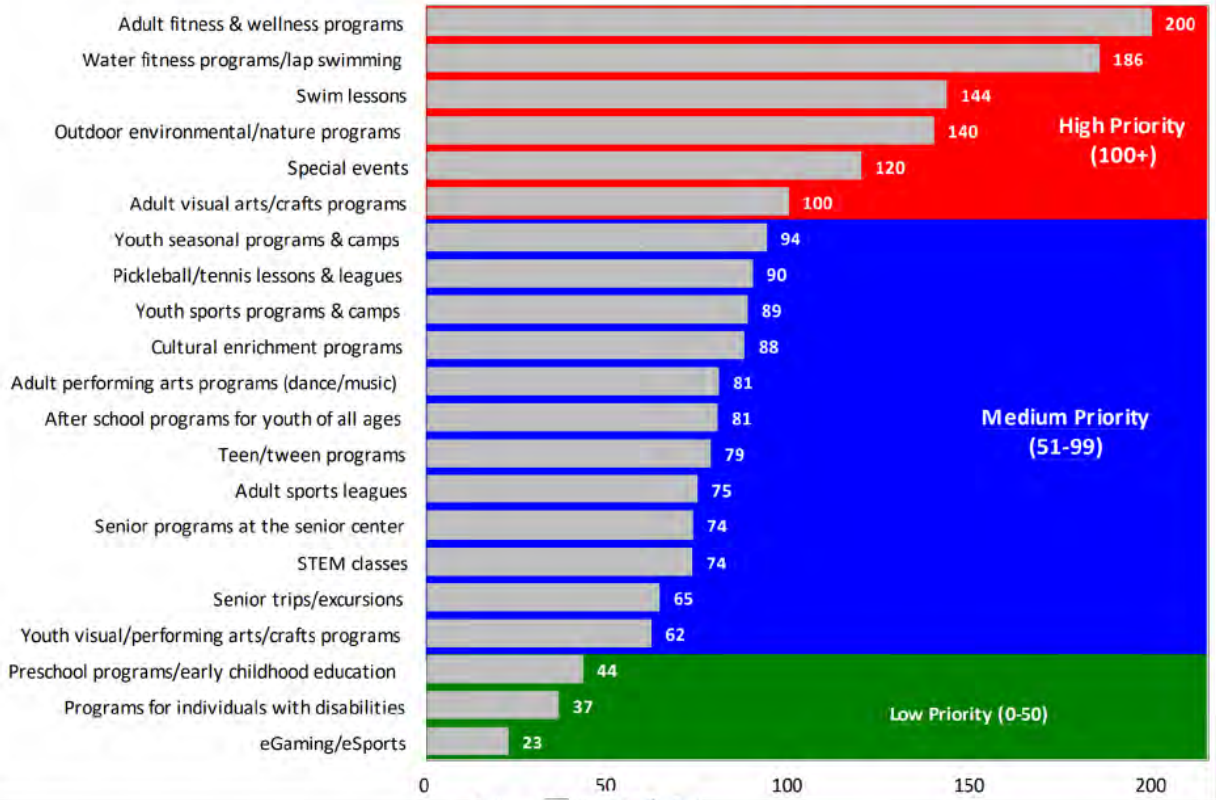


TELL US YOUR IDEAS!
bit.ly/wellingtonparksplan



Parks, Recreation, Open Space, and Trails Master Plan

Top Priorities for Investment for Parks and Recreation Programs/Activities Based on Priority Investment Rating



What Did You Hear? – Group Discussion



The Voices of Wellington: Overall Engagement Findings

Have a SAY
How you PLAY!

The future of parks and recreation belongs to you! Tell us your ideas and join the planning process.

TELL US YOUR IDEAS!
bit.ly/wellingtonparksplan

TOWN OF WELLINGTON
Parks, Recreation, Open Space, and Trails Master Plan

High Priority	Medium Priority	Low Priority
Community Center	Access to Nature	Community Gardens
Swimming Pool	Shade	Interactive Maps of Trails and Paths
Sports Programs	Permanent Restrooms	Dogs
Multipurpose Space	Park Accessibility	New Parkland
Basketball Courts	Playgrounds	Free Programs
Pickleball Courts	Splash Pads	Diverse New Programs
Park Safety Improvements	Sports Fields	
Special Events	Park Maintenance	
Trails	Communication/Engagement	
	Senior Programs	
	Fitness and Wellness Programs	
	Tennis Courts	



Analysis

Summary of Findings




Programs

Have a **SAY**
How you
PLAY!

The future of parks and recreation belongs to you! Tell us your ideas and join the planning process.



TELL US YOUR IDEAS!
bit.ly/wellingtonparksplan

 **Town of WELLINGTON** Parks, Recreation, Open Space, and Trails Master Plan

The Town of Wellington Parks and Recreation Department is well-positioned with a strong foundation in youth and adult sports, but survey findings, participation data, and revenue trends highlight the need to broaden program diversity. Priorities should include aquatics, early childhood, pickleball, adult wellness, family/cultural programming, and equitable distribution across town. These recommendations align with both Master Plan goals and CAPRA standards by helping to ensure programs are inclusive, balanced, and reflective of community needs.

Programs

Have a SAY
How you PLAY!

The future of parks and recreation belongs to you! Tell us your ideas and join the planning process.



TELL US YOUR IDEAS!
bit.ly/wellingtonparksplan

City of WELLINGTON Parks, Recreation, Open Space, and Trails Master Plan

Barrier	Survey Findings	Heat Map Findings
Cost and Access to Facilities	Households report traveling to Fort Collins or Loveland for affordable camps and programs; concerns about recreation affordability.	Lower participation on the town's edges and rural areas suggests that cost and distance are compounding access barriers.
Location / Distribution	Residents east of I-25 report limited facilities and program access; requests for services closer to their neighborhoods.	Heat map shows significantly lower participation east of I-25 and in outlying areas, confirming location-based access inequities.
Timing / Scheduling	Requests for more flexible program schedules (yoga, fitness) and all-day summer camps to support families.	Lower participation in outlying neighborhoods may reflect challenges aligning program schedules with travel requirements to central facilities.
Facility Gaps	Strong demand for a recreation center with pool, indoor gym, and year-round program space; pickleball-specific infrastructure highly requested.	Central facilities (Leeper Center, Community Park) drive most participation; lack of distributed indoor and aquatic facilities limits access in peripheral neighborhoods.

Programs – Key Findings

Have a **SAY**
How you **PLAY!**

The future of parks and recreation belongs to you! Tell us your ideas and join the planning process.

TELL US YOUR IDEAS!
bit.ly/wellingtonparksplan

CITY OF WELLINGTON Parks, Recreation, Open Space, and Trails Master Plan

1. Develop an Aquatics Program Portfolio
2. Expand Early Childhood and Youth Non-Sport Programs
3. Strengthen Adult Fitness and Wellness Offerings
4. Expand and Formalize Pickleball Programming
5. Increase Family and Cultural Programming
6. Address Geographic and Equity Barriers
7. Diversify Revenue Beyond Sports



Parks, Trails, Facilities Service Levels

The Town of Wellington Parks and Recreation Department (Department) manages a parks system spanning 131.3 acres across 18 locations, serving 12,432 residents in this growing Front Range community. While this represents a meaningful foundation, the current system falls short of meeting community expectations and regional standards.

This park inventory and level of service (LOS) analysis provides a baseline for evaluating service levels and guiding future investments. In doing so, it reveals significant deficiencies in distribution, outdated or missing amenities, and service gaps that limit equitable access and diminish overall community well-being.

Although the Department has worked diligently to maintain and expand its offerings, Wellington's parks system is underperforming relative to the needs of a rapidly growing population. Trail connectivity remains fragmented, high-quality open spaces for active recreation are lacking, and opportunities for court sports such as basketball and pickleball are minimal.



TOWN OF
WELLINGTON

Parks, Trails, Facilities Service Levels

Have a **SAY**
How you
PLAY!

The future of parks and recreation belongs to you! Tell us your ideas and join the planning process.



TELL US YOUR IDEAS!
bit.ly/wellingtonparksplan

City of WELLINGTON Parks, Recreation, Open Space, and Trails Master Plan

Classification	Sites	Total Acres
Pocket Park	1 park	0.55
Neighborhood Park	5 parks	22.26
Community Park	3 parks	60.79
Natural Area/Linear Park	1 park	17.49
Open Space	6 areas	26.63
Total System	16 locations	127.73



Parks, Trails, Facilities Service Levels

Have a SAY
How you
PLAY!

The future of parks and recreation belongs to you! Tell us your ideas and join the planning process.



TELL US YOUR IDEAS!
bit.ly/wellingtonparksplan

City of WELLINGTON Parks, Recreation, Open Space, and Trails Master Plan



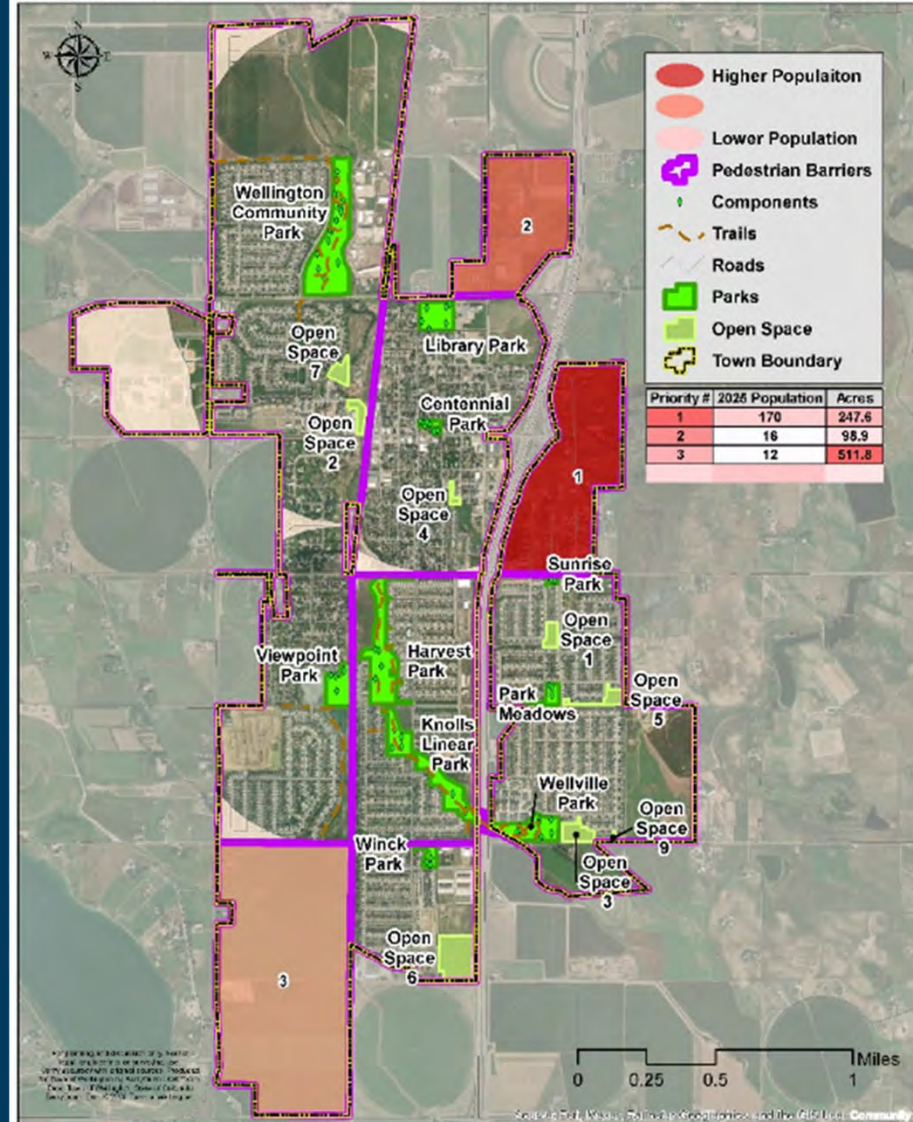
Facility	Approx. Acres	Amenity Count	Park Condition
Pocket Parks			
Sunrise Park	0.55	2	Fair
Neighborhood Parks			
Centennial Park	1.58	7	Fair
Library Park	7.98	6	Fair
Park Meadows	2.57	5	Fair
Viewpointe Park	7.79	5	Fair
Winick Park	2.33	3	Fair
Community Parks			
Harvest Park	20.46	5	Good
Wellington Community Park	29.9	27	Good
Wellville Park	10.44	11	Good
Natural Areas			
Knolls Linear Park	17.49	6	Good
Open Spaces			
Open Space 1	2.42	0	Poor
Open Space 2	2.63	0	Poor
Open Space 3	4.32	0	Poor
Open Space 4	0.97	0	Poor
Open Space 5	3.43	0	Poor
Open Space 6	12.5	0	Poor
Open Space 7	2.89	0	Poor
Open Space 9	1.06	0	Poor



Parks, Trails, and Facilities Service Levels

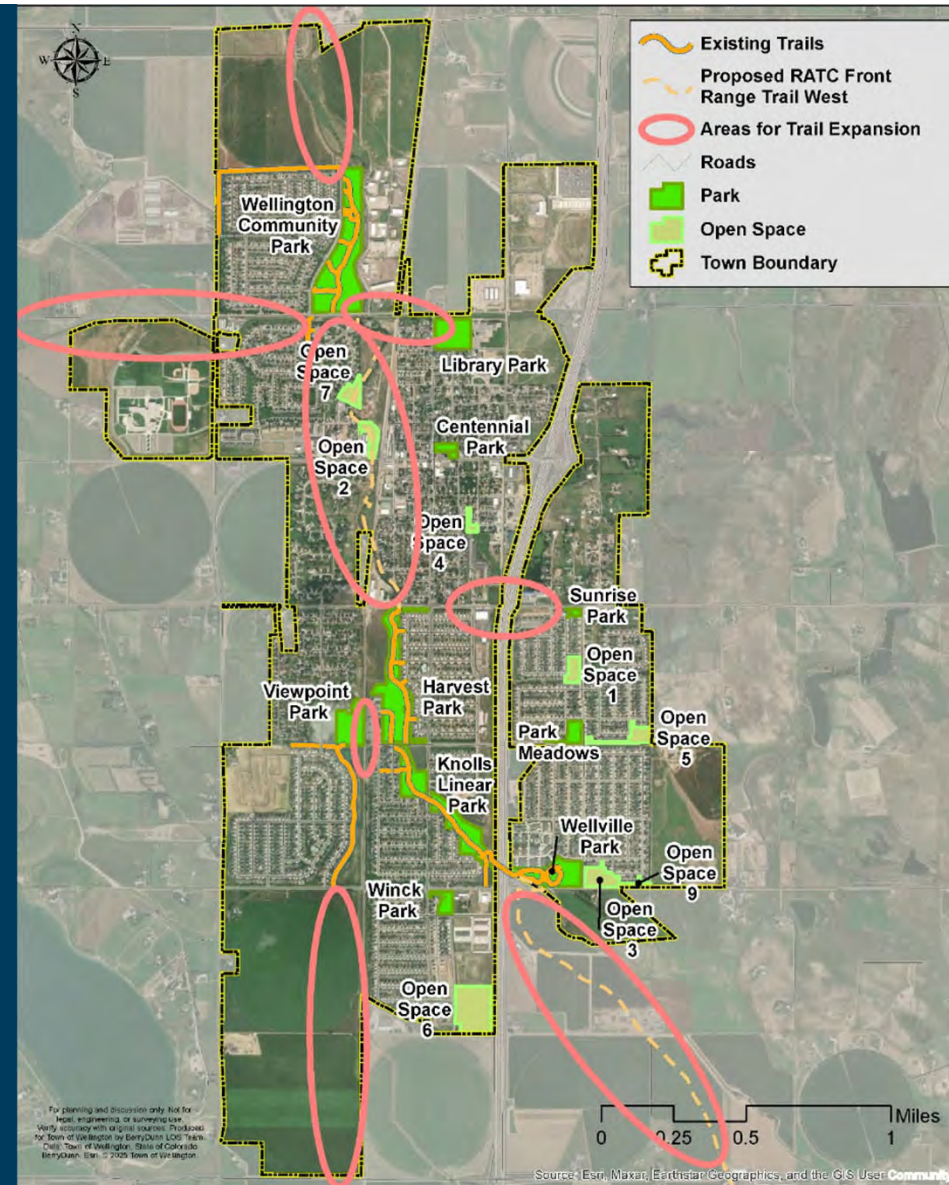
- **Priority Area #1:** Northeast of Jefferson Avenue and Frontage Road, where about 170 residents lack pedestrian access caused by Jefferson Road and Interstate 25.
- **Priority Areas #2 – #3:** Less densely developed areas within town boundaries, housing approximately 28 residents, where land has not been converted to residential housing.
- **Other Areas:** Southeast of E. County Road 66 and N. County Road 9, which is platted for residential housing, but census data and aerial imagery is out of date; southwest of E. County Road 60 and the railroad, which currently serves as farm land; and west of Wellington Middle-High School.

Gaps in Walkable Access to Parks
Wellington, Colorado



Parks, Trails, and Facilities Service Levels

1. Integrating mobility and connectivity planning throughout town, county, and partner transportation planning initiatives to maximize success. Quality transportation opportunities, especially those that maximize diverse offerings, are highly desired for residents, businesses, and visitors attracted to the Colorado lifestyle.
2. Extending the north-south trail between Wellington Community Park and Harvest Park, continuing the proposed RATC and Front Range Trail West.
3. Extending the trail out of town to the north toward Wyoming, west to the foothills, and southwest toward Fort Collins, contributing to important regional systems.
4. Creating a safe pedestrian overpass or underpass near Interstate 25 and Jefferson Avenue, similar to the connection between Wellville and Knolls Park.
5. Developing pedestrian infrastructure to link Viewpoint Park with Harvest and Knolls Parks, enabling safe passage across the railroad tracks.
6. Creating safe pedestrian routes that connect parks, the town center, and nearby schools, which are presently divided by Highway 1, Cleveland Avenue, I-25, and the railroad.



Parks, Trails, and Facilities Service Levels: Key Findings

- **Strong Overall System Performance With Limited Excellence**
- **Emerging Trail Network With Significant Connectivity Gaps**
- **Positive Amenity-to-Population Ratios Mask Uneven Distribution**
- **Park Distribution Leaves Critical Service Gaps**
- **Balanced Approach to Recreation and Conservation With Limited Activation**
- **Walking Equity Requires Immediate Attention**

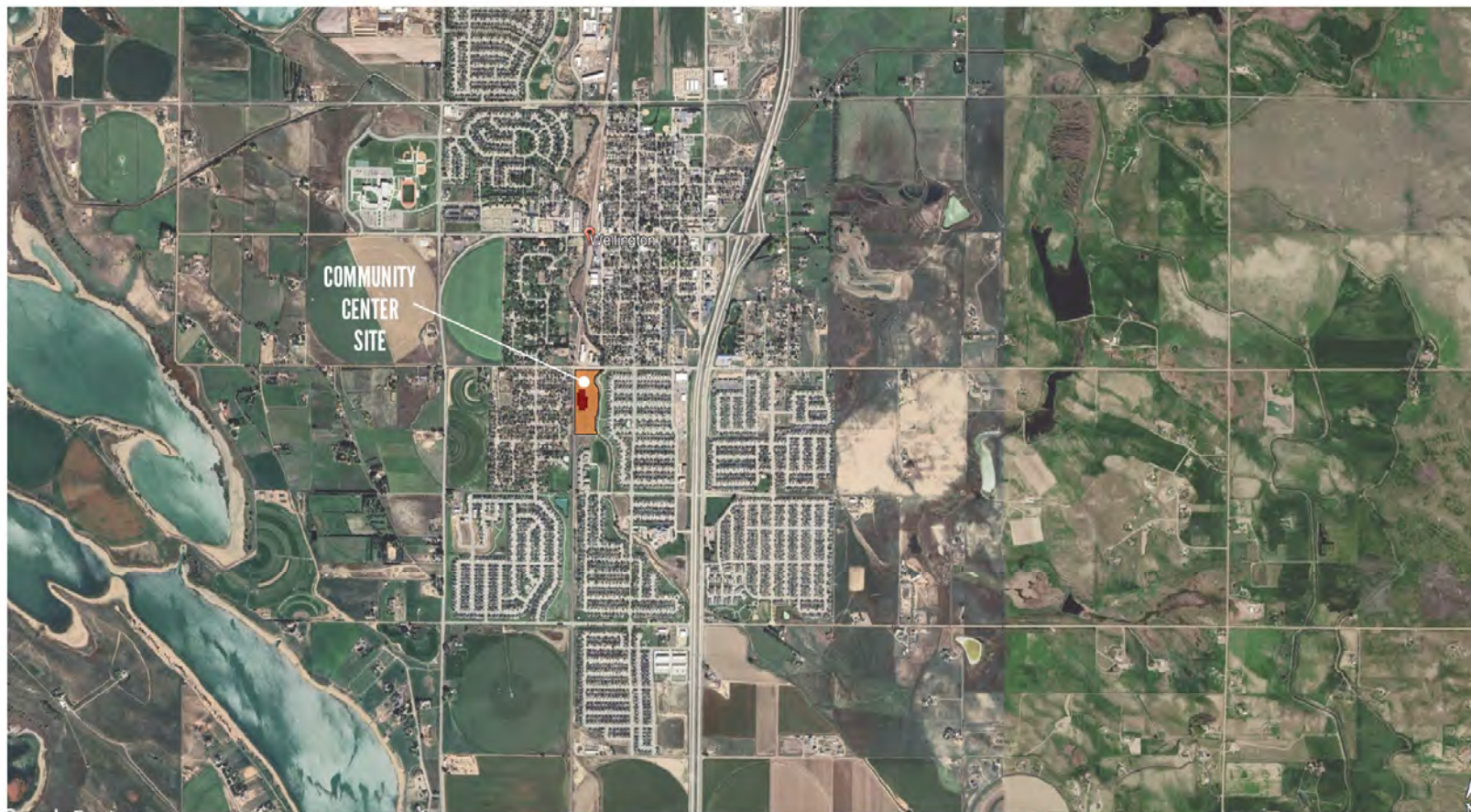


Feedback on Analysis – Group Discussion



Parks, Trails, and Facilities Service Levels: Recreation Center

WELLINGTON COMMUNITY CENTER

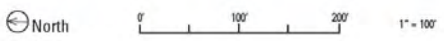


North

Proposed Site Location 

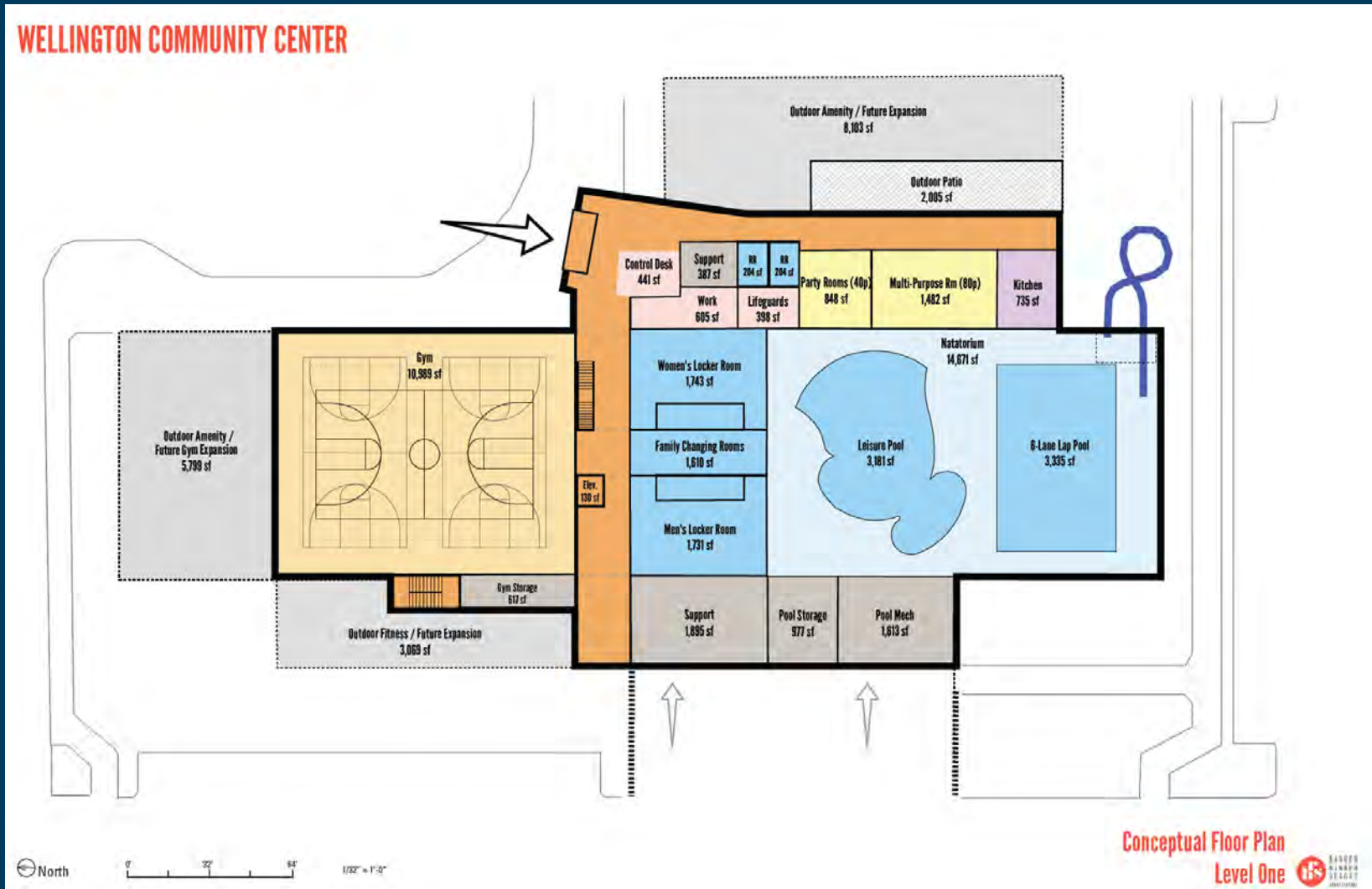
Parks, Trails, and Facilities Service Levels: Recreation Center

WELLINGTON COMMUNITY CENTER

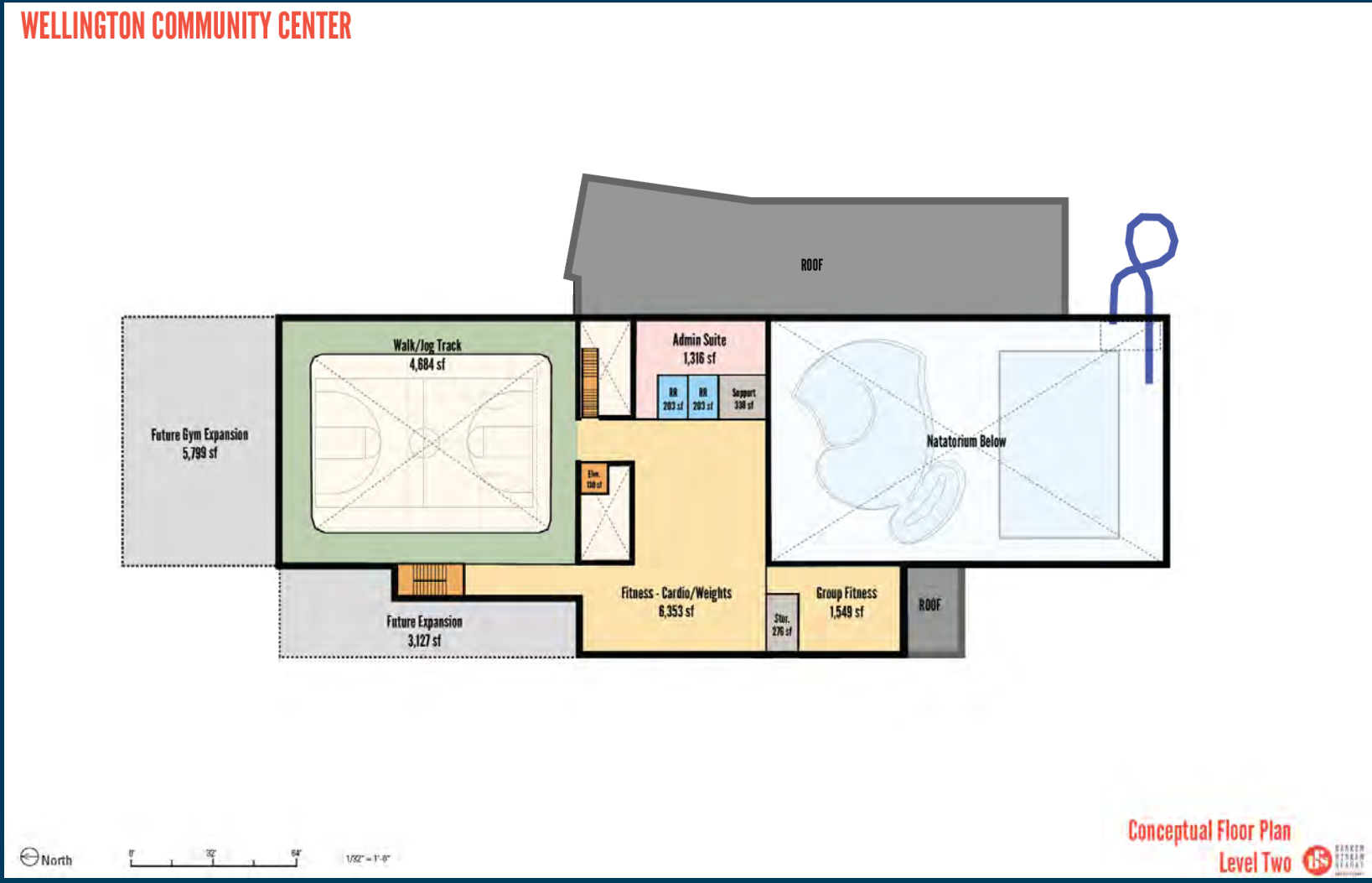


Conceptual Site Plan  BARBER BINKER SEARCH

Parks, Trails, and Facilities Service Levels: Recreation Center



Parks, Trails, and Facilities Service Levels: Recreation Center



Feedback on Analysis – Group Discussion



Progress



We are here

Phase 4: Visioning

Phase 5: PROST Master Plan, Implementation, and Action Plan Development

- Strategic Initiatives
- Recommendations
- Action Plan
- Draft and Final Plan

Phase 6: Implementation

- Implementation Workshops





BerryDunn



**Town of Wellington
PROST Master Plan and
Feasibility Study
Board of Trustees
Visioning Session
February 17, 2026**



The Shed Yard
 (719) 590-7433
 info@theshedyard.com



Scan or Click to
 Checkout Online

Order Information

Store	The Shed Yard	Order Type	Sale
Sales Person	Allen Fisher P:(719) 590-7433	Product Type	Building
Order Date	01/29/2026	Product Build	Build to Order
Est. Delivery Period	03/12/2026 - 03/26/2026		

Bill To	Ship To
Name William Cooksey	Name William Cooksey
Phone (970) 342-5055	Phone (970) 342-5055
Email cookseyw@wellingtoncolorado.gov	Email cookseyw@wellingtoncolorado.gov
Address	Address

Item	Color	Qty	Price	Total	Tax
10x14 Hi-Wall		1	\$5,620.00	\$5,620.00	
10x14x7 Hi Wall Barn		1	Included		✓
LP Smart Side	Dark Blue	1	Included		✓
LP Trim	New White	1	Included		✓
Overhead Storage, 20 PSF Capacity (Per Foot)		4	Included		✓
Metal Roof : Pro Panel	Charcoal Gray (Metal)	1	Included		✓
① 3' Single Wood Door		1	\$126.00	\$126.00	✓
② 8' x 7' Overhead Door (Non-Insulated) (Onsite Install additional)		1	\$1,414.00	\$1,414.00	✓
Loft Ladder		1	\$345.00	\$345.00	✓
Anchors (Per Piece Installed)		4	\$92.00	\$368.00	✓
96"x42" Heavy Duty Aluminum Ramp (8' Door)		1	\$681.00	\$681.00	✓
8" Center Floor Joists		1	\$175.00	\$175.00	✓

Note: the ① refers to the index number on the plan view.

Sub-total \$8,729.00
 Sales Tax (5.4%) \$0.00
Order Total \$8,729.00

Quotes valid 14 days. 3D Images may not be accurate or to scale. The timeline shown is for fully assembled deliveries only, delivery email will supersede the timeline shown. Prices for Foundation or Dirt work on purchase order are Estimated. PERMITTING--- The Shed Yard is NOT responsible for permitting unless specified. Permitted buildings do NOT get scheduled for delivery until permits are approved. PAYMENT--- 2% Credit Card Fee, ACH option is free. Buildings with concrete or permitting will require an additional draw on top of the initial deposit before foundation schedules. CHANGE ORDERS/CANCELLATIONS--- All cancellations will be refunded less 3% and any work completed, Unless its over 18 Months, then the deposit is Nonrefundable. Standard shed orders may be modified within 5 business days of purchase. Code-compliant shells and double garages may be modified up until final drawings are approved. Any changes requested after these periods will incur additional fees. WARRANTY--- Love it Or Return It policy only applies to buildings delivered fully assembled. The Shed Yard is not responsible for failed electrical inspections except in cases where the failure is due to workmanship. All electrical is installed with exposed wiring. The Shed Yard is not responsible for electrical inspections once the interior has been finished. DELIVERY--Free Delivery to most of CO! (Excluding Build Onsite or on Concrete). All buildings are delivered fully assembled unless Build Onsite has been chosen. Leveling and Item Removal will be charged time and material. Delivery is by truck and trailer, no crane. Clearance needed for fully assembled delivery is 1' wider than the width of your building up to the placement location (if it's straight). If path to location has turning involved, then 10' wider than your building is needed. If delivery goes over 1 hour due to obstacles, a fee of \$100 an hour will be charged. If property doesn't have width clearance, On Site Construction (Option) will be required. On Site Garages typically are assembled within 1 to 3 days, GARAGE DOORS are NOT installed same day. Final sales tax is calculated through Intuit, (Not This Customizer) it may vary slightly on the final invoice.

Quote Notes

None

Available Purchase Methods

Purchase this building using any of the available purchase methods.

<u>Rent-to-Own</u>	<u>Purchase Outright</u>
Security Deposit \$0.00	Deposit \$2,182.25 (25% of Order Total)
24 Month RTO \$519.58	
36 Month RTO \$404.12	
48 Month RTO \$363.71	
60 Month RTO \$323.30	

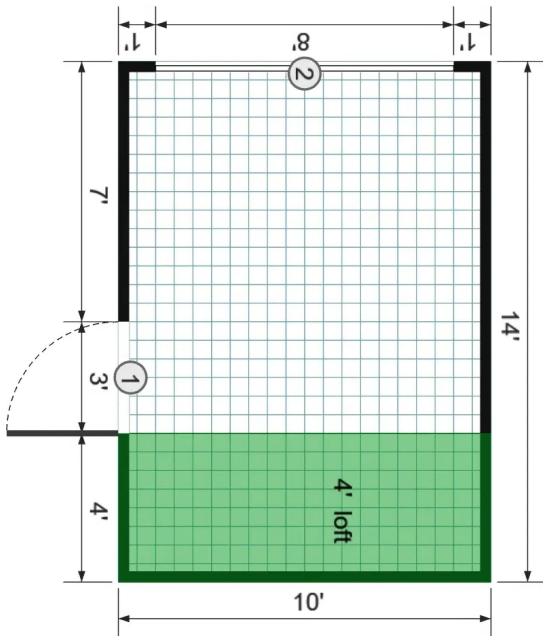
Terms and Conditions

3D Images may not be accurate or to scale. The timeline shown is for fully assembled deliveries only, delivery email will supersede the timeline shown. Prices for Foundation or Dirt work on purchase order are Estimated. PERMITTING--- The Shed Yard is NOT responsible for permitting unless specified. Permitted buildings do NOT get scheduled for delivery until permits are approved. PAYMENT--- 2% Credit Card Fee, ACH option is free. Buildings with concrete or permitting will require an additional draw on top of the initial deposit before foundation schedules. CHANGE ORDERS/CANCELLATIONS--- All cancellations will be refunded less 3% and any work completed, Unless its over 18 Months, then the deposit is Nonrefundable. Standard shed orders may be modified within 5 business days of purchase. Code-compliant shells and double garages may be modified up until final drawings are approved. Any changes requested after these periods will incur additional fees. WARRANTY--- Love it Or Return It policy only applies to buildings delivered fully assembled. The Shed Yard is not responsible for failed electrical inspections except in cases where the failure is due to workmanship. All electrical is installed with exposed wiring. The Shed Yard is not responsible for electrical inspections once the interior has been finished. DELIVERY--Free Delivery to most of CO! (Excluding Build Onsite or on Concrete). All buildings are delivered fully assembled unless Build Onsite has been chosen. Leveling and Item Removal will be charged time and material. Delivery is by truck and trailer, no crane. Clearance needed for fully assembled delivery is 1' wider than the width of your building up to the placement location (if it's straight). If path to location has turning involved, then 10' wider than your building is needed. If delivery goes over 1 hour due to obstacles, a fee of \$100 an hour will be charged. If property doesn't have width clearance, On Site Construction (Option) will be required. On Site Garages typically are assembled within 1 to 3 days, GARAGE DOORS are NOT installed same day. Final sales tax is calculated through Intuit, (Not This Customizer) it may vary slightly on the final invoice.



The Shed Yard
 (719) 590-7433
 info@theshedyard.com

Building Configuration



Terms and Conditions

3D Images may not be accurate or to scale. The timeline shown is for fully assembled deliveries only, delivery email will supersede the timeline shown. Prices for Foundation or Dirt work on purchase order are Estimated. PERMITTING--- The Shed Yard is NOT responsible for permitting unless specified. Permitted buildings do NOT get scheduled for delivery until permits are approved. PAYMENT--- 2% Credit Card Fee, ACH option is free. Buildings with concrete or permitting will require an additional draw on top of the initial deposit before foundation schedules. CHANGE ORDERS/CANCELLATIONS--- All cancellations will be refunded less 3% and any work completed, Unless its over 18 Months, then the deposit is Nonrefundable. Standard shed orders may be modified within 5 business days of purchase. Code-compliant shells and double garages may be modified up until final drawings are approved. Any changes requested after these periods will incur additional fees. WARRANTY--- Love it Or Return It policy only applies to buildings delivered fully assembled. The Shed Yard is not responsible for failed electrical inspections except in cases where the failure is due to workmanship. All electrical is installed with exposed wiring. The Shed Yard is not responsible for electrical inspections once the interior has been finished. DELIVERY--Free Delivery to most of CO! (Excluding Build Onsite or on Concrete). All buildings are delivered fully assembled unless Build Onsite has been chosen. Leveling and Item Removal will be charged time and material. Delivery is by truck and trailer, no crane. Clearance needed for fully assembled delivery is 1' wider than the width of your building up to the placement location (if it's straight). If path to location has turning involved, then 10' wider than your building is needed. If delivery goes over 1 hour due to obstacles, a fee of \$100 an hour will be charged. If property doesn't have width clearance, On Site Construction (Option) will be required. On Site Garages typically are assembled within 1 to 3 days, GARAGE DOORS are NOT installed same day. Final sales tax is calculated through Intuit, (Not This Customizer) it may vary slightly on the final invoice.

Contact Signature _____

Date _____

Annual PROST Retreat: January 2026	Items	February 11, 2026 Regular Meeting	Items	February 17, 2026 PROST and BOT Visioning Work Session with Berry Dunn	Items	March 11, 2026 Regular Meeting	Items	April 8, 2026 Regular Meeting	Items	May 13, 2026 Regular Meeting	Items	June 5th, Special Meeting	Items	June 10, 2025 Regular Meeting	Items	Late June, Special Project	Items	July 8, 2026 Regular Meeting	Items (Potential Cancellation)	August 12, 2026 Regular Meeting	Item	September 9, 2026 Regular Meeting	Item	October 7, 2026 Regular Meeting	Item	November 22, 2025 Regular Meeting - THURSDAY DUE TO HOLIDAY	Item	December 9, 2026 Regular Meeting	Item	January, 2027 Regular Meeting (CANCELLED)
		GUESTS	Rec Team: Emma, Kristen, Elle (Events)	Presentation	Jason Genk - Berry Dunn	Agenda	Upcoming Events: 4th of July and Kids to Park Day	GUEST	Brittany Lenoir - TMP	Agenda	Veterans Day			Action	Cancel July															
		Presentation: Billy Cooksey	MPCC - Berry Dunn Work Session with BOT			Action	Skate Park Upgrades																							
		Agenda	Dates for All Events			Action	Meeting Minutes							Park Visit	WCP															
		Agenda	Future Meetings Calendar			Work Session	Veterans Garden																							
		Presentation/ Action	Harvest Shed			Action	Veterans Garden	Park Visit	East Side	Park Visit	Viewpointe /Potential CC Location									Park Visit	Centennial									
		Presentation/Action: Robert Sausaman	Skate Park Upgrades																											